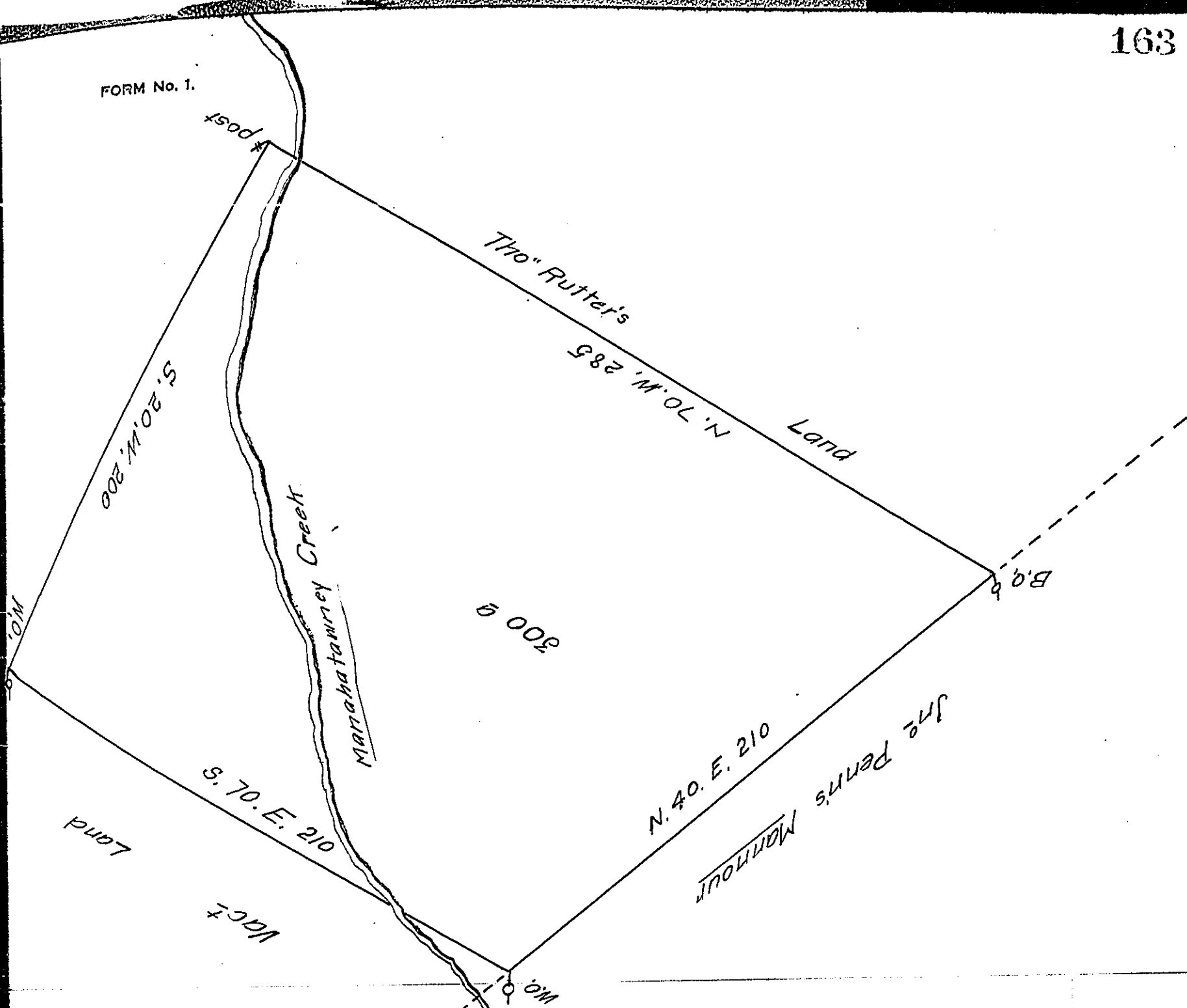


FORM No. 1.



Pursuant to an Order from the Surveyor General Surveyed and laid out for ~~Thomas Shute~~ a Tract of land (being part of a Greater Tract Purchased by the Said Shute of the free Society of Traders) Situate in the County of Philadelphia on Manahatunney Creek beginning at a black oak being a Corner of Thomas Rutter's land thence by the Same North Seventy Degrees west Two hundred Eighty five perches to a post thence by y^e s^d Rutter's land South twenty Degrees west thirty one perches to a post a Corner of s^d Rutter's land thence by vacant land the same course one hundred ~~seventy~~ five perches to a Whiteoak thence by Vacant land South Seventy Degrees East two hundred and Ten perches to a W^c oak Standing in the line of John Penns Mannour thence by the Same North forty Degrees East Two hundred and Ten perches to the place of beginning Containing three hundred Acres with Dillowance of Six p Cent laid out December y^e 2^d 1725 by Nicholas Scull

IN TESTIMONY that the above is a copy of the original remaining on file in the Department of Internal Affairs of Pennsylvania, made conformably to an Act of Assembly approved the 16th day of February, 1833, I have hereunto set my Hand and caused the Seal of said Department to be affixed at Harrisburg, this second day of November, 1910.

Henry Howard
Secretary of Internal Affairs.